



# DEHANCER

AFFINITY PHOTO PLUGIN SETUP GUIDE



# Dehancer Film plugin for Affinity Photo

## Affinity Photo plugin Setup Guide for Windows 2022-05-17

|  |    |
|--|----|
| System Requirements (Windows)              | 3  |
| Downloading and choosing the right package | 4  |
| Dehancer Film for Affinity Photo (Windows) | 6  |
| Recommended RAW settings                   | 11 |
| Application path and user data location    | 12 |

---

## System Requirements (Windows)

### Hardware requirements:

- PC with Nvidia or AMD GPU
- OpenCL compatible GPU
- GPU drivers properly installed and up to date

### Software compatibility:

- Windows 10 64 bit (genuine licensed installation is required)
- Any current version of Affinity Photo that supports loading Adobe Photoshop plugins

**Note:** Plugin operation with hacked or modified host applications and OS is not guaranteed.

### Known issue: Unicode symbols (e.g., Cyrillic) in system paths

Dehancer may not work properly in Windows 10 if system paths contain **Unicode characters (e.g., Cyrillic)**. To solve the issue, follow these steps:

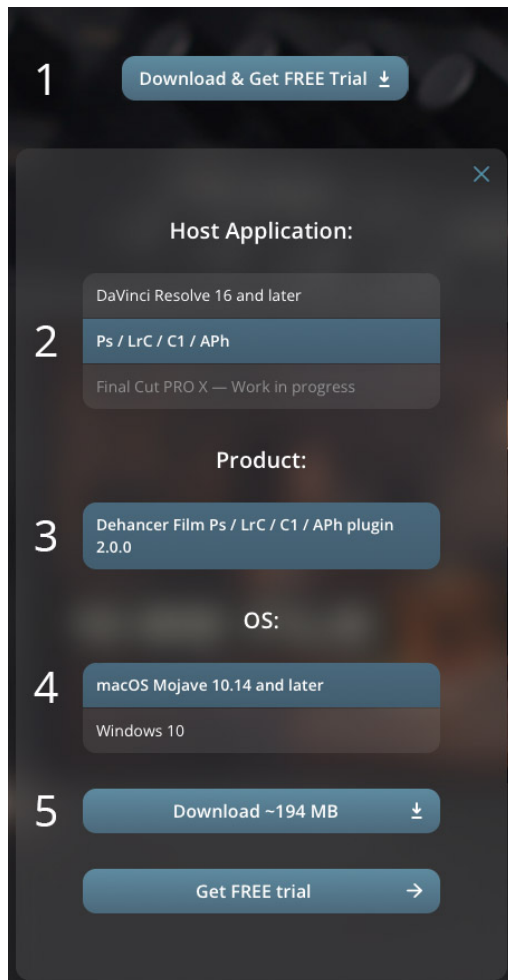
1. Sign in as **Administrator**
2. Open the **Start** menu and click the **Settings** 'gear' icon.
3. Click the **Time & Language** → **Language** on the left side.
4. Click on the **Administrative language settings** link on the right side.
5. Select the **Administrative** tab and click the **Change system locale** button.

Depending on the Windows version, this setting may be found in an alternate location, for example: Start → Settings → Time & Language → Date, time, & regional formatting → Additional date, time, & region settings → Region → Administrative → Change system locale

6. Enable the checkbox **BETA: Use Unicode UTF-8 for worldwide language support** and restart your computer.

## Downloading and choosing the right package

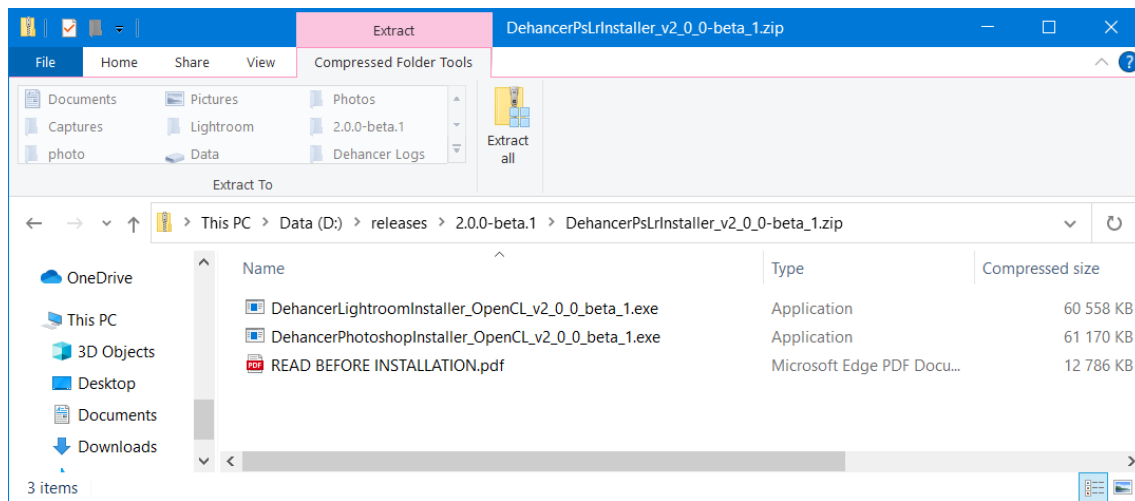
1. Make sure that your computer meets the **system requirements** for the plugin to work correctly.
2. Download the latest version of the plugin from **www.dehancer.com**



1. Press the button **Download and Get FREE Trial**.
2. Select **Ps / LrC / C1 / APh** as the Host Application.
3. Select **Dehancer Film Ps / LrC / C1 / APh plugin** as the Product.
4. Check the **Operating System** selection.
5. Hit **Download** button.  
Your download will start automatically.

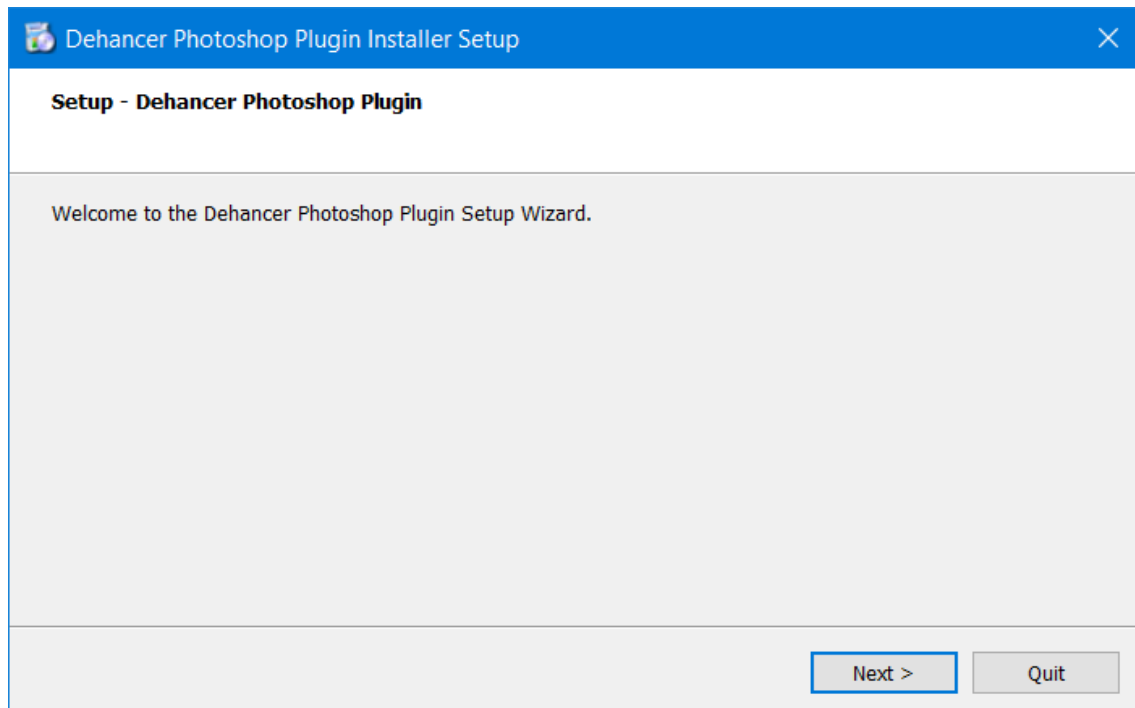


3. Unzip the downloaded zip file, if your system didn't do it automatically:



**ATTENTION!**  
The Adobe Photoshop plugin is used for Affinity Photo installation

4. Run the **Photoshop** installation file and follow the installation steps.



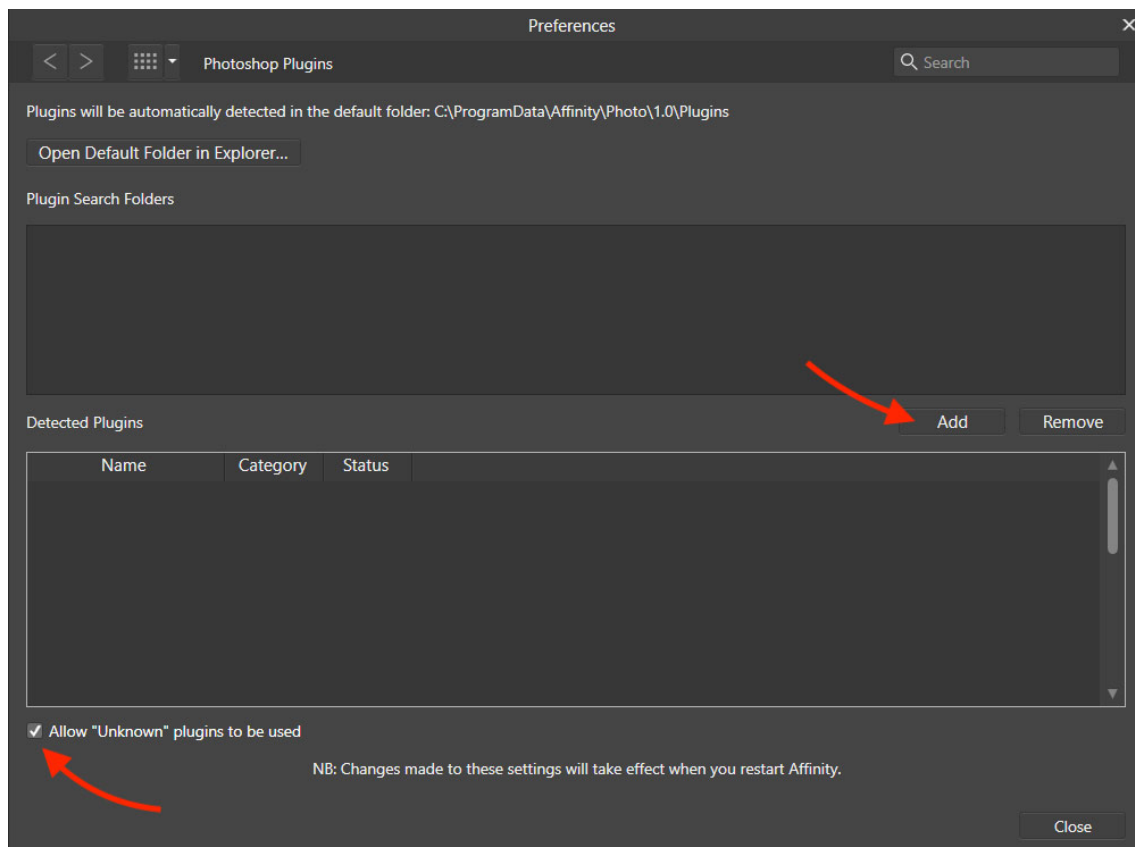
---

## Dehancer Film for Affinity Photo (Windows)

5. Launch **Affinity Photo**. If the program was already running, you don't need to restart it.

6. Open Affinity Photo plugins preferences:

**Affinity Photo** → **Preferences** → **Photoshop Plugins**



7. Click the **Add** button under the **Plugin Search Folders** list and specify the installed Dehancer Photoshop plugin location:

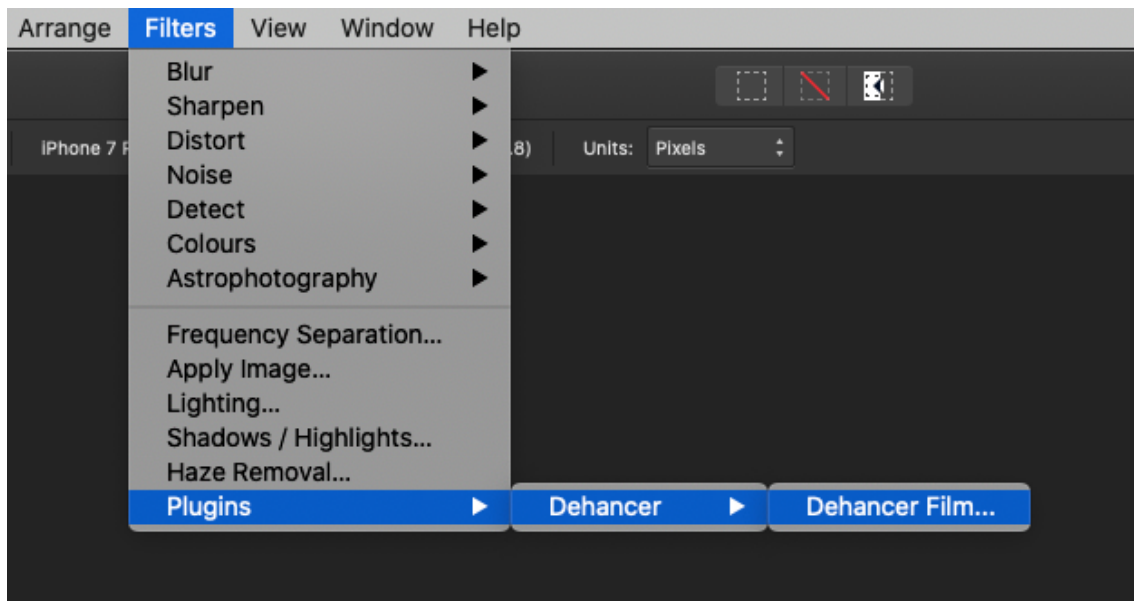
**C:\Program Files\Common Files\Adobe\Plug-Ins\CC\Dehancer**

8. Enable the checkbox **Allow "Unknown" plugins to be used**

9. **Close** Preferences and **restart Affinity Photo** as required.

10. After the application is restarted, a new plugin should appear in the list:

**Filters → Plugins → Dehancer → Dehancer Film**

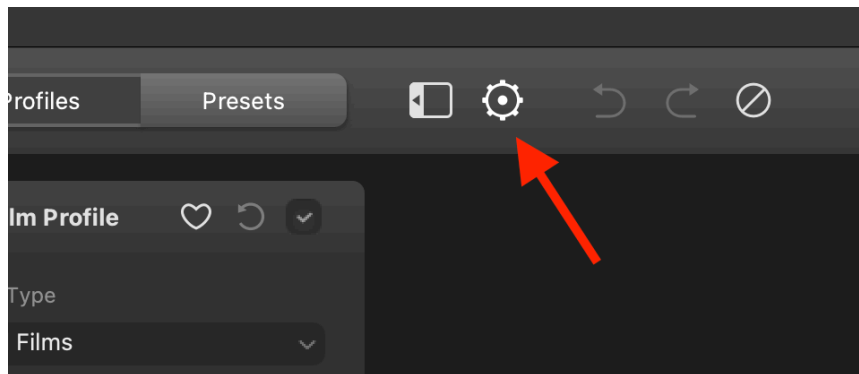


Note that your image must be presented in the **sRGB color space** to be displayed and processed properly. Support for other color spaces will be added later.

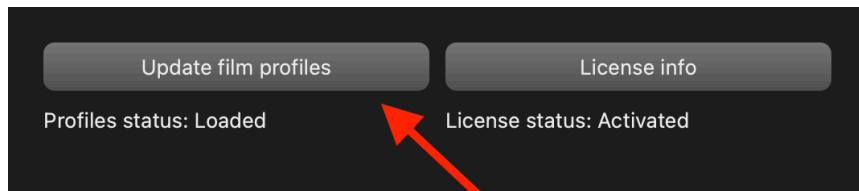
→ Related article:

[Recommended Color Settings for Dehancer Ps/LrC](#)

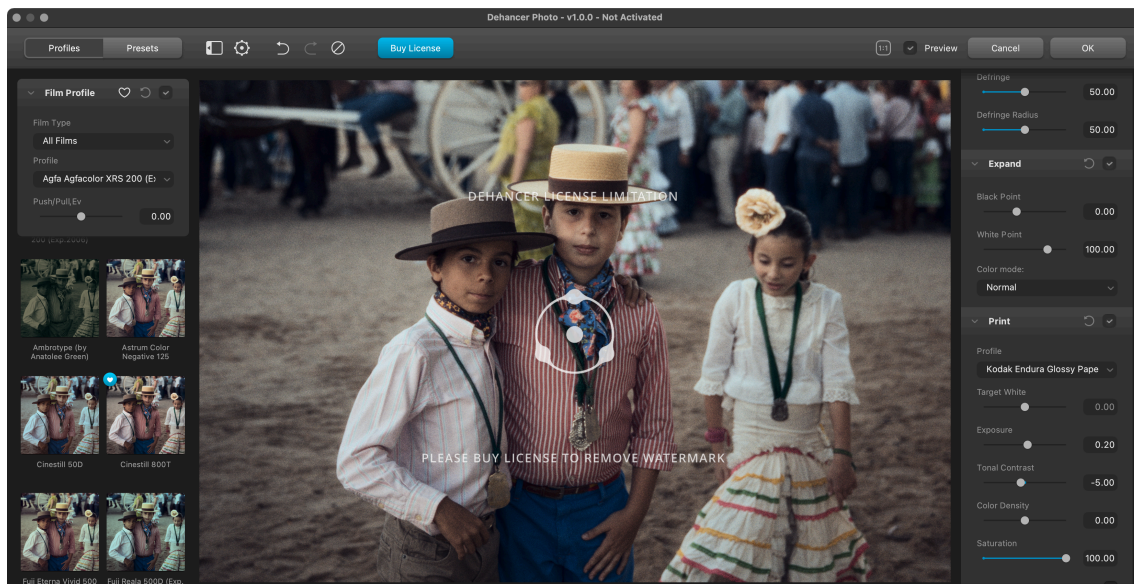
11. At first launch, the Settings window will open automatically. You can also open the Settings at any time by clicking on the gear icon in the toolbar.



12. Use the button **Update Film Profiles** to download the profiles the first time.



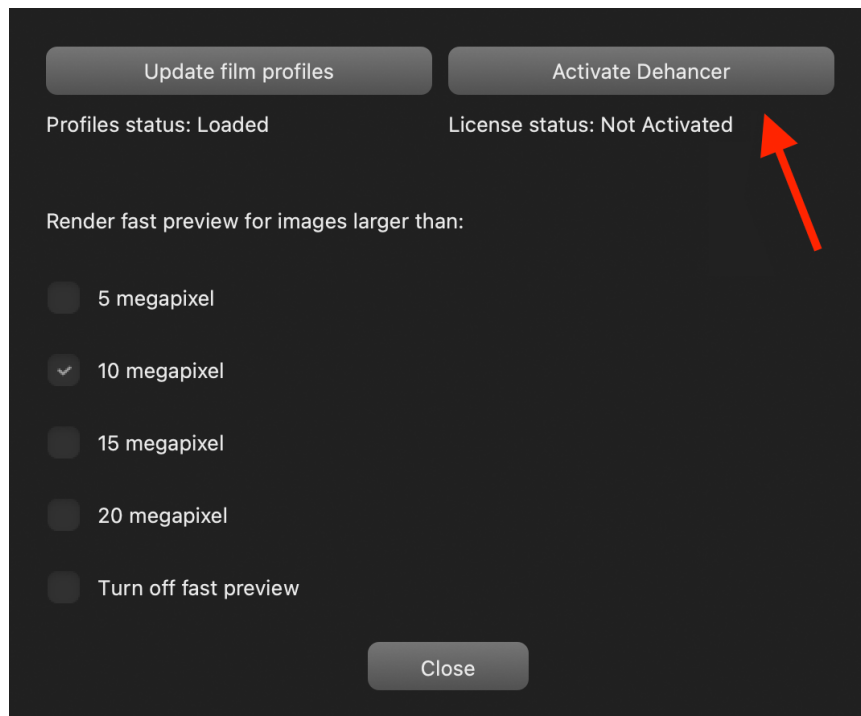
13. Now Dehancer is ready to use.



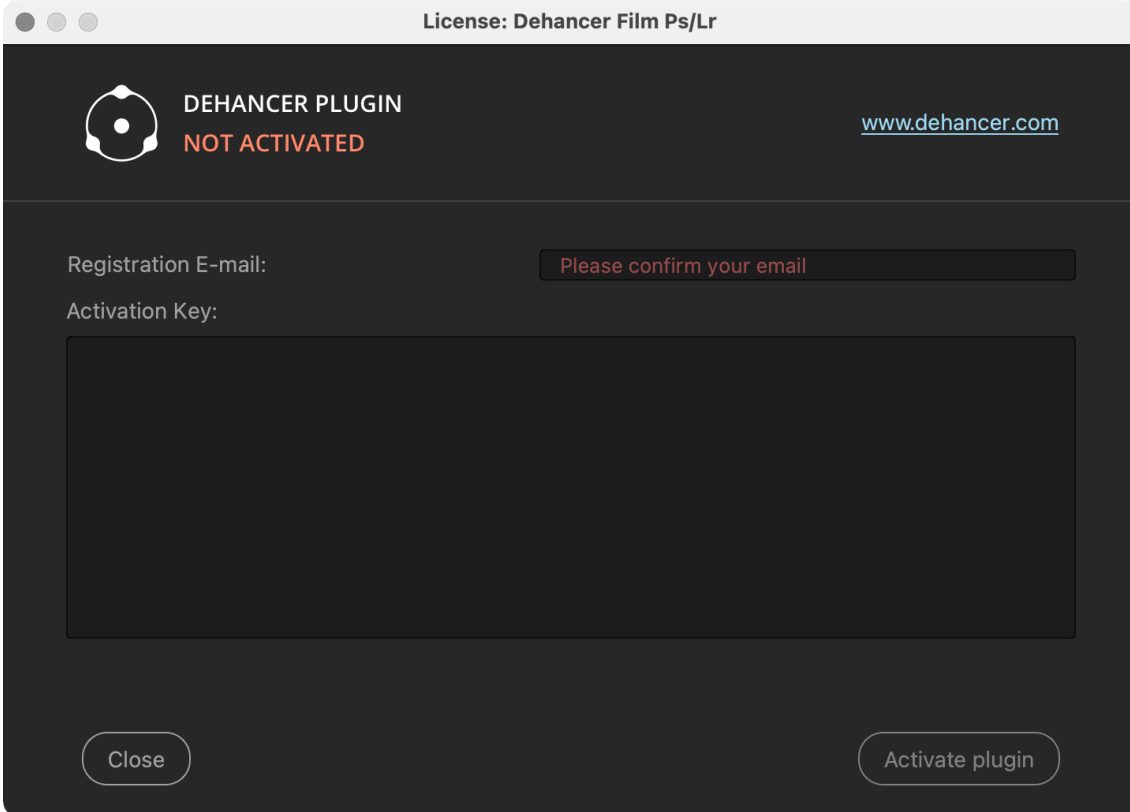
14. To remove the watermark, buy the License or **get the free 2-week trial on our website.** The License will be automatically sent to your account email and displayed in your User Profile as well.

Each License contains Activation Keys for two workstations (seats). Each Key activates both plugins – Adobe Photoshop and Adobe Lightroom.

15. Launch the Activation widget.



16. Enter your email and Activation Key, then press the **Activate plugin** button.



The image shows a dark-themed window titled "License: Dehancer Film Ps/Lr". In the top left corner is the Dehancer logo, a stylized white circle with four dots. To its right, the text "DEHANCER PLUGIN" is displayed in white, with "NOT ACTIVATED" in orange below it. In the top right corner, the URL [www.dehancer.com](http://www.dehancer.com) is shown in blue. The main area of the window contains two input fields. The first is labeled "Registration E-mail:" and contains the placeholder text "Please confirm your email" in red. The second is labeled "Activation Key:" and is a large, empty rectangular box. At the bottom left is a "Close" button, and at the bottom right is an "Activate plugin" button.

License: Dehancer Film Ps/Lr

DEHANCER PLUGIN  
NOT ACTIVATED

[www.dehancer.com](http://www.dehancer.com)

Registration E-mail: Please confirm your email

Activation Key:

Close Activate plugin

17. Enjoy!

---

## Recommended RAW settings

**While developing RAW photos in Affinity Photo, we recommend:**

- Correct the most severe deviations in exposure and white balance
- Use the linear contrast curve if possible, avoiding clipping in shadows and highlights
- Disable noise reduction and sharpening
- Avoid any local enhancements which might cause visible halos
- Work with developed files in **sRGB 16 bit** format

### Third-party RAW converters

For instance **C1 (Capture One Pro)** combined with **Linear curve**, and **RPP (Raw Photo Processor)** with **Colorimetric Gamma** mode produces good results. You can also use any other RAW converter.

**While processing RAW photos, we recommend:**

- Correct the most severe deviations in exposure and white balance
- Use the Linear contrast curve if possible, avoiding clipping in shadows and highlights
- Disable noise reduction and sharpening
- Avoid any local contrast enhancement which might cause visible halos
- Export files in **sRGB TIFF 16 bit** format



---

## Application path and user data location

Below you can find the main system paths of the installed application components and user data locations, which you may need when contacting support or maintaining the plug-in.

### Installation (Windows)

**Adobe Photoshop and Affinity Photo plugin:**

C:\Program Files\Common Files\Adobe\Plug-Ins\CC\Dehancer

**Adobe Lightroom and Capture One plugin:**

C:\Program Files\Dehancer Lightroom Plugin\Dehancer Lightroom.exe

### User Data (Windows)

**Shared folder:**

C:\Users\{user}\AppData\Local\dehancer\com.dehancer.film\_shared

**User Presets folder:**

C:\Users\{user}\AppData\Local\dehancer\com.dehancer.film\_shared/presets

**Adobe Photoshop and Affinity Photo plugin log:**

C:\Users\{user}\AppData\Local\dehancer\com.dehancer.film\_shared/  
dehancer\_logs/photoshop\_plugin.log

**Adobe Lightroom and Capture One plugin log:**

C:\Users\{user}\AppData\Local\dehancer\com.dehancer.film\_shared/  
dehancer\_logs/lightroom\_plugin.log